

Facility Information



Yoro Park

Yoro Waterfall

A famous waterfall loved by writers and artists, it was selected for inclusion in the 100 Best Falls in Japan. 30 meters high and 4 meters wide, its clear waters crashing against the rocks below is a sight to see. Take the time to bask in this magnificent scenery. On July 1 of every year, an opening ceremony takes place at Yoro Waterfall with a prayer for the safety of visitors. This has become a summer tradition.



Kodomo-no-kuni

Entrance / Free
Open / 9:00 am - 4:30 pm
Kodomo-no-kuni in Yoro Park is a playground for children that makes full use of the area's geography and environment. The area is approximately 100,000m². Major facilities include Kodomo-no-ke (Children's House), Children's Pool, Boken Hiroba (Adventure Land), Sukusuku Hiroba (Thriving Square), and Nobinobi Hiroba (Playground). There are also occasional events such as workshops, and picture book readings.



The Site of Reversible Destiny - Yoro

Artwork intended to be experienced physically was created by the world famous artists, Shusaku Arakawa and his partner, poet Madeline Gins after 30 some years of planning.

Open / 9:00 am - 5:00 pm (Entrance until 4:30 pm)

Entrance fee	Adult	850 yen / Group 600 yen
	High school students	550 yen / Group 400 yen
Closed	Elementary and Junior high students	350 yen / Group 250 yen
	Every Tuesday (Wednesday if Tuesday falls on a holiday, year-end and New Year holidays (December 29 - January 3))	

*Group discount for parties of 20 or more. *Preschoolers are free. *Elementary, Junior and senior high students must be accompanied by an adult. © 1997 Reversible Destiny Foundation. Reproduced with permission of the Reversible Destiny Foundation

Yoro Mini Golf

Open / 9:00 am - 4:00 pm (Closed / 5:00 pm)

Enjoy with the whole family! Easy and Fun!
This par 72 mini golf course is played entirely on natural grass, and is very reminiscent of playing real gold. There are 3 courses.

General	500 yen
Junior high school age and under	250 yen

Club and ball are free of charge!



Tennis Court

Yoro Park has an all-weather court, allowing guests to enjoy tennis year-round.

2 hour ticket	600 yen (court)
---------------	-----------------



To reserve a Tennis court online, click here ▶



Rakuichi-Rakuza-Yoro

Open: 10:00 am - 4:00 pm
(Hours may change depending on the season or the weather)

Rakuichi-Rakuza - Yoro is lined with food stall-like shops offering a wide variety of foods. Relax and enjoy a leisurely meal on the deck feeling the four seasons with a fabulous view.



RECAMP Yoro

Camp on open hilly terrain, camp in the woods, camp with your pet, or camp in the comfort of a lodge. Enjoy outdoors for a day, have a BBQ, or spend your time in any way that fits your plans.

Scan here for more information (Make reservations through Nap)



By car Approximately 10 minutes from Yoro IC, 20 minutes from Ogaki IC, 25 minutes from Sekigahara IC

By train 10-minute walk from Yoro Station [Yoro Railway]

About Parking Lot

Open/9:00 am - 5:00 pm

*Buses should park in Parking No. 3 or the Traffic Safety Association's parking lot (private)

Yoro Park Office

503-1267 1298-2 Takabayashi, Yoro-cho, Yoro-gun, Gifu

Closed / Tuesdays (Wednesday if Tuesday falls on a holiday), year-end and New Year holidays (December 29 - January 3)

<https://www.yoro-park.com>

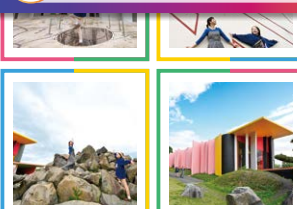
Inquiries about Yoro Park

☎ 0584-32-0501 9:00am - 5:00pm

The Site of Reversible Destiny-Yoro(Yoro Park) Official Instagram



The Site of Reversible Destiny-Yoro @hantenchi_yoropark



Send in your photos!

Send your photo tagged @hantenchi_yoropark
Good photos will be posted on the site ♪



Have fun
YORO PARK

YORO-PARK MAP

